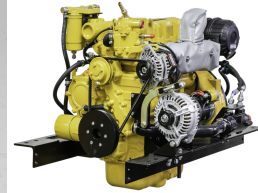


**Shire - NEW Shire 43 Keel Cooled 43hp Marine Diesel Engine.**

£ 7,120



**Description**

Brand New Crated Shire 43 Four Cylinder 43hp Keel Cooled 2500rpm Marine Diesel Engine Package Complete With PRM150 Gearbox, Heavy Duty Rails With Flexible Mounts, Low Noise Air Silencer And Filter, Fuel Filter With Water Drain Tap, Control Panel Including Tachometer, Hour Meter and Alarm, etc. Retail price of £8,791 inc VAT. However, at Marine Enterprises we are able to offer a discount of £1,671 off the retail price in exchange for your old engine, giving a Final Price of £7,120 inc. VAT!! Any make or model diesel engine will be accepted. Running on non-running. So long as it is complete and was built after 1980 it will be accepted. If you do not have an engine to part exchange or if the engine is older than 1980, please contact us as we can still offer you a great price on a new engine!! Price excludes delivery. Delivery can gladly be arranged – cost depending upon location. We will cover the cost of collecting the part exchange unit within the UK so there are no hidden extras. We will even contribute towards the transport cost if your PX engine is located outside the UK!!

**Sales status:** available

**Manufacturer:** Shire

**Model:** NEW Shire 43 Keel Cooled 43hp Marine Diesel Engine.

**Year built:** 2023

**No. of cylinders:** 4

**Cylinder capacity:** 2.5L

**Starter:** Electric start

**Cooling type:** Fresh water

**Condition:** New

**Sale Type:** New

**Sale:** Dealer

**Trade in possible:** yes

**Power:** 43

**Motor:** 32

**Fuel:** Diesel